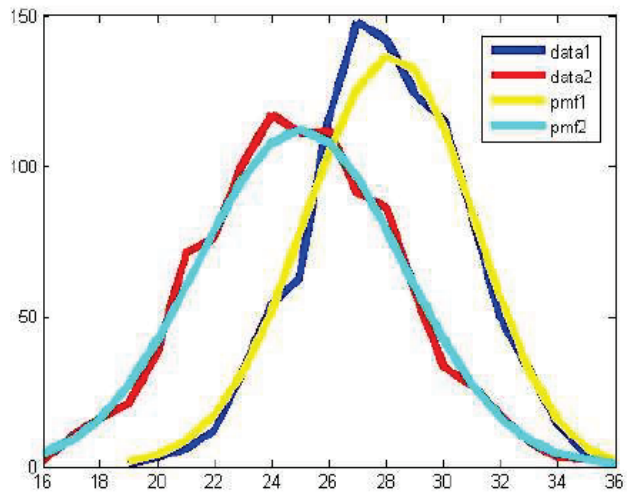
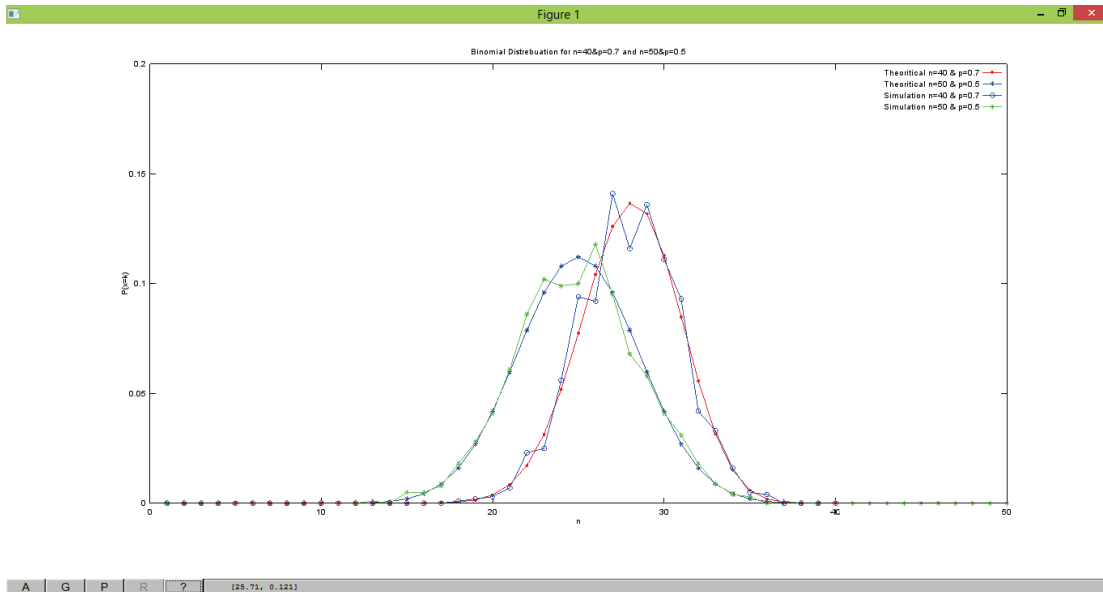


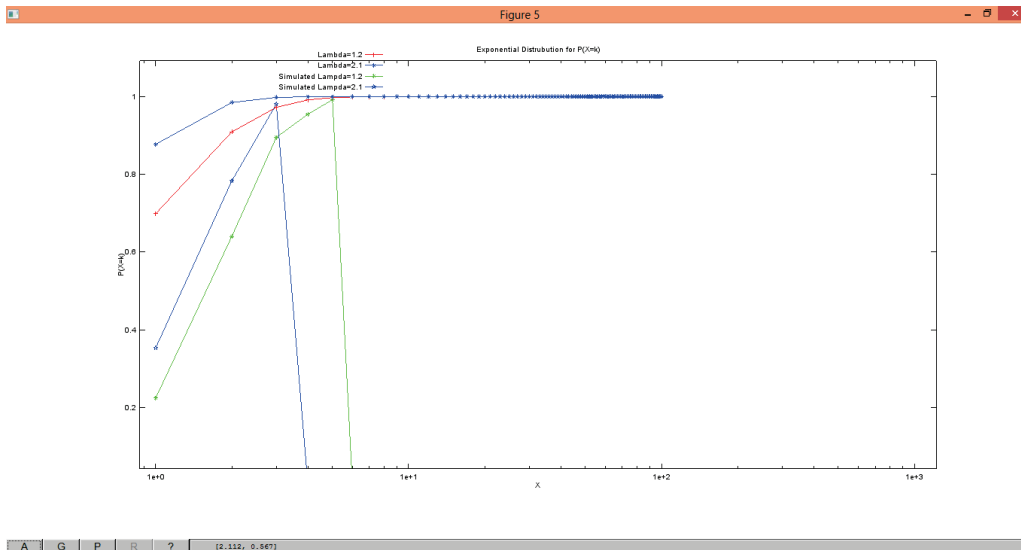
Don't use the same line styles for different curves. Color is not useful when a reader reads the printout paper.



Text in legend needs to be self-explanatory. Curves should not all be solid line style.



Markers should not be the same and should not be too small to distinguish. You need to enlarge text font to make them readable.



The end of the simulation curves are processed in a wrong way. You need to continue to generate the values to make all curves have the same number of points on the figure.

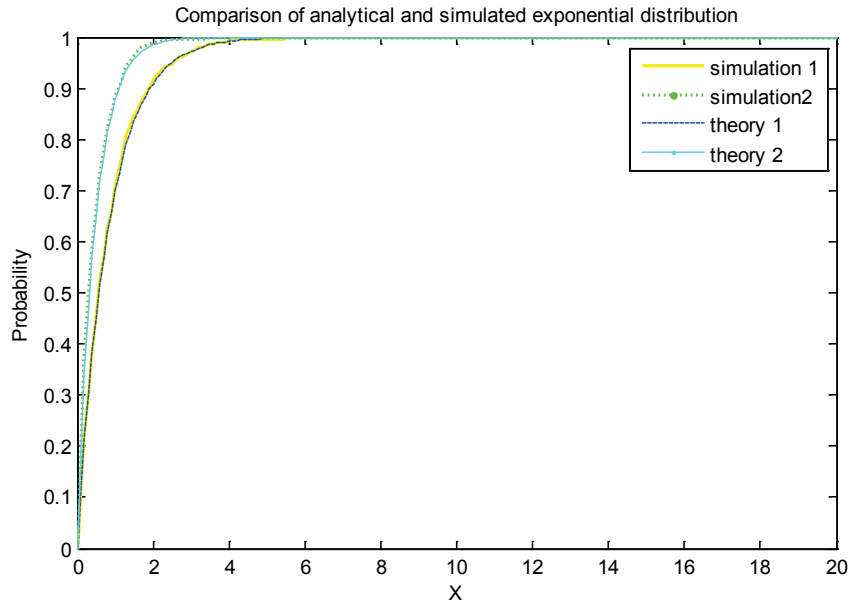


Figure curves should occupy the majority of the graph area. The above figure should use a much smaller X-axis scale, such as 0 ~ 6.

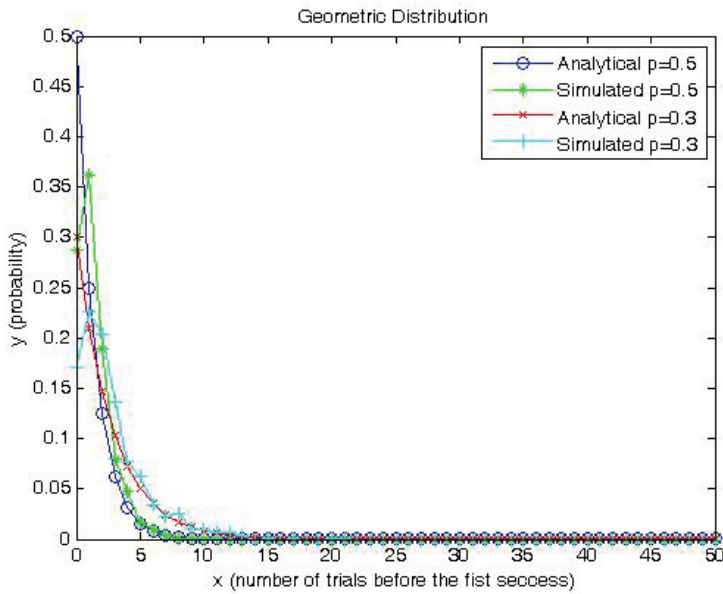
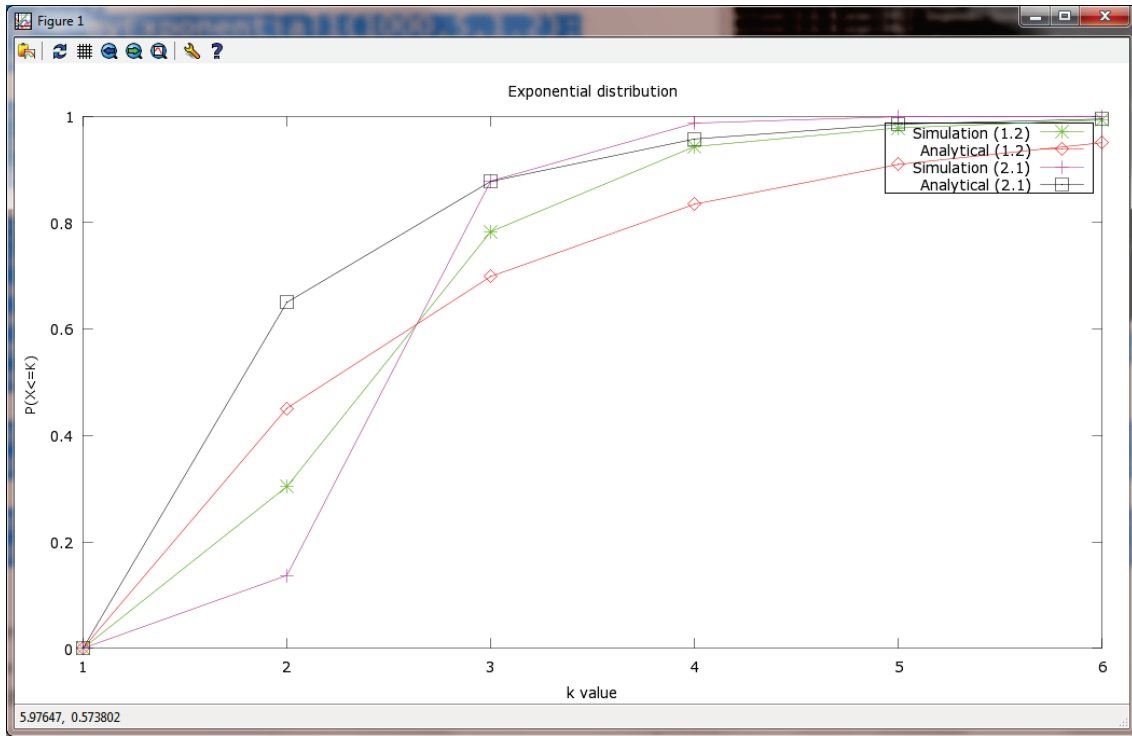


Figure curves should occupy the majority of the graph area. The above figure should use a much smaller X-axis scale, such as 0 ~ 15.



The figure should have many more data points to make the curves smooth.