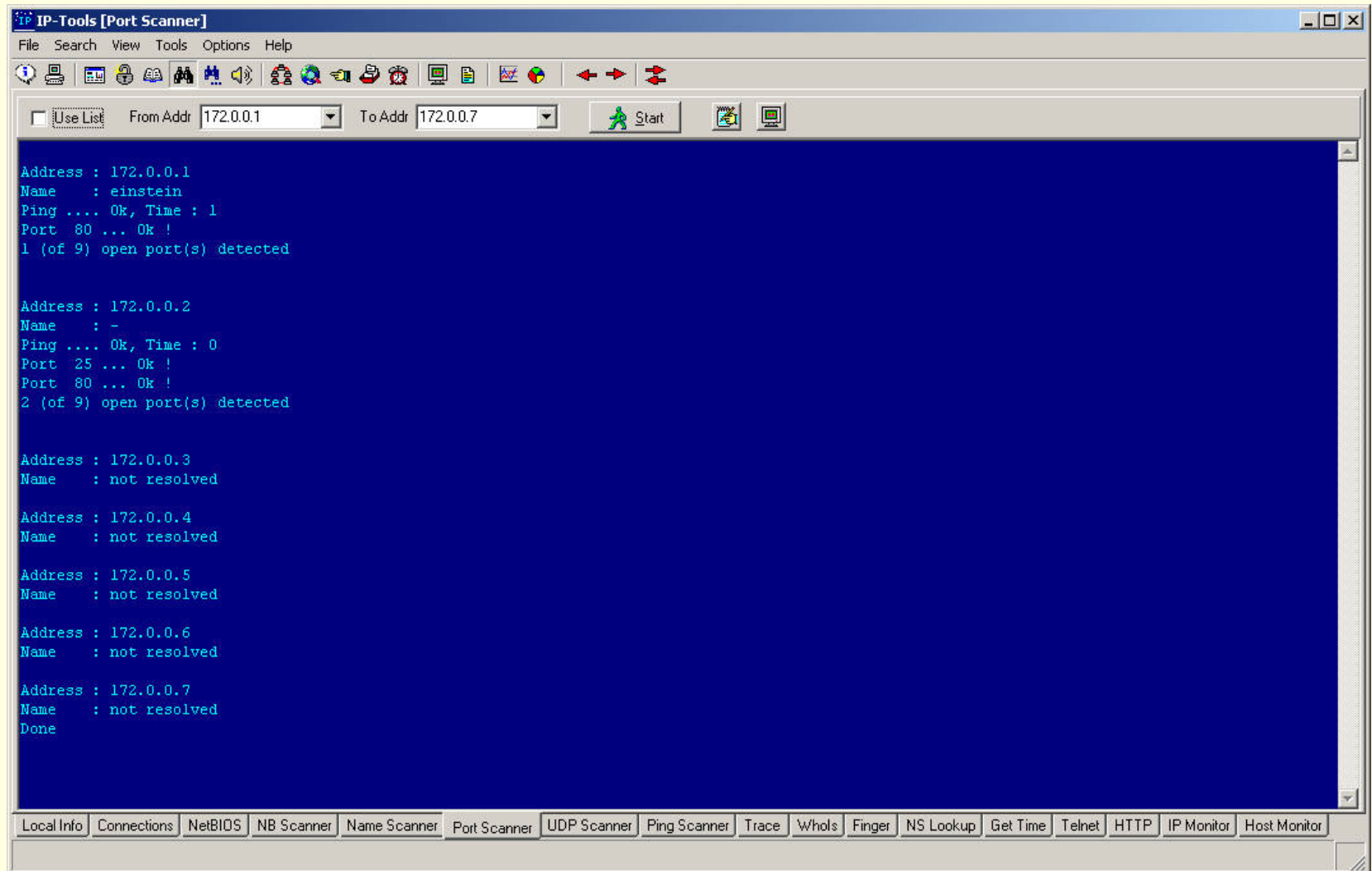


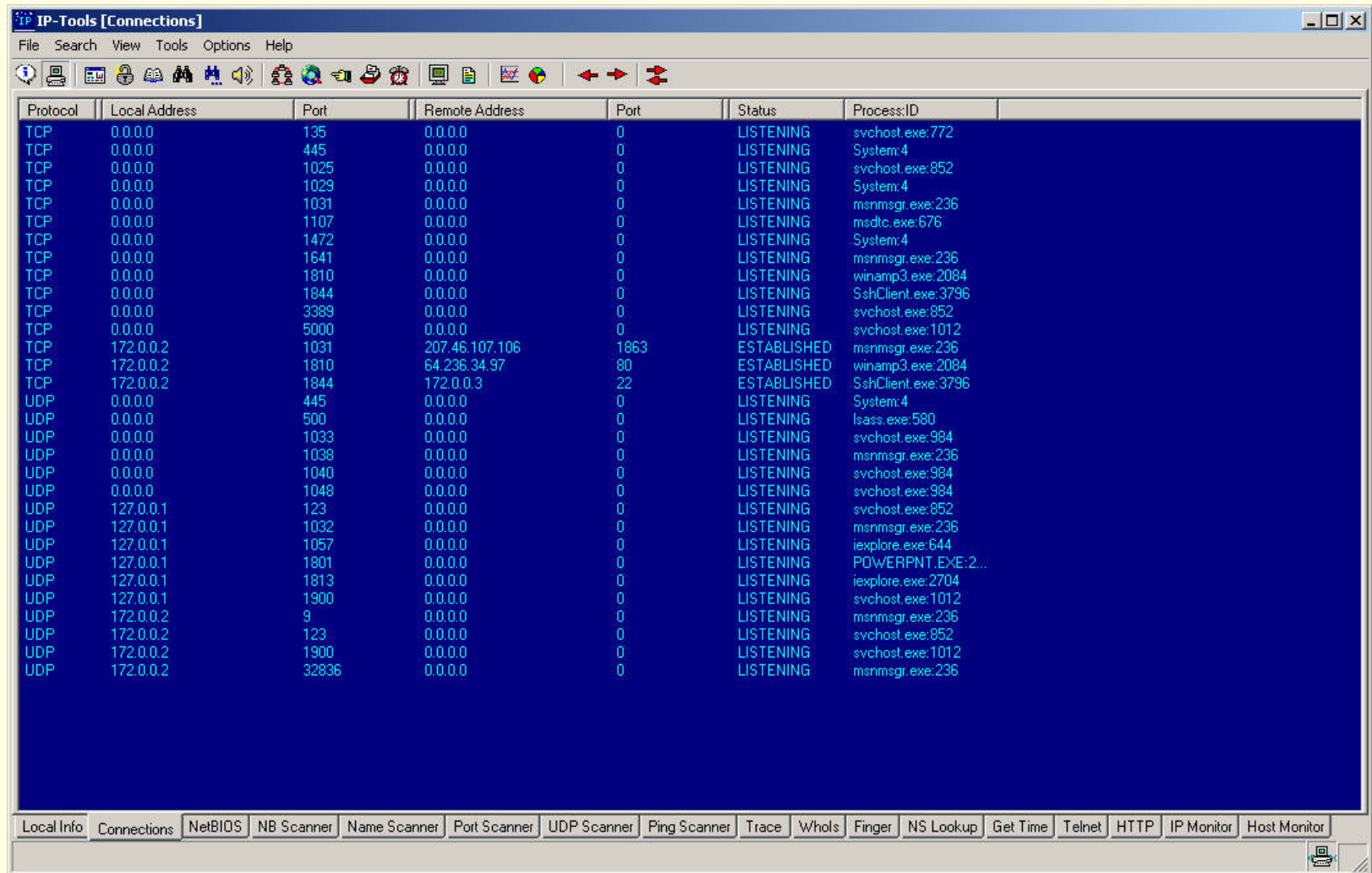
IPTools

- Multiple functionality
 - Local system information
 - Local system open connections
 - What ports are open and what services are using those ports
 - Windows specific scans
 - NetBios
 - NB Scanner
 - Name scanner
 - Port, UDP, Ping scanner
 - Trace route, whois, finger and NS lookup,
 - Telnet client, web browser
 - IP Monitor
 - Host monitor

Port Scanner



Connections



The screenshot shows the IP-Tools [Connections] window. The window title is "IP-Tools [Connections]". The menu bar includes "File", "Search", "View", "Tools", "Options", and "Help". The toolbar contains various icons for network-related functions. The main area displays a table of connections with the following columns: Protocol, Local Address, Port, Remote Address, Port, Status, and Process:ID.

Protocol	Local Address	Port	Remote Address	Port	Status	Process:ID
TCP	0.0.0.0	135	0.0.0.0	0	LISTENING	svchost.exe:772
TCP	0.0.0.0	445	0.0.0.0	0	LISTENING	System:4
TCP	0.0.0.0	1025	0.0.0.0	0	LISTENING	svchost.exe:852
TCP	0.0.0.0	1029	0.0.0.0	0	LISTENING	System:4
TCP	0.0.0.0	1031	0.0.0.0	0	LISTENING	msnmsgr.exe:236
TCP	0.0.0.0	1107	0.0.0.0	0	LISTENING	msdtc.exe:676
TCP	0.0.0.0	1472	0.0.0.0	0	LISTENING	System:4
TCP	0.0.0.0	1641	0.0.0.0	0	LISTENING	msnmsgr.exe:236
TCP	0.0.0.0	1810	0.0.0.0	0	LISTENING	winamp3.exe:2084
TCP	0.0.0.0	1844	0.0.0.0	0	LISTENING	SshClient.exe:3796
TCP	0.0.0.0	3389	0.0.0.0	0	LISTENING	svchost.exe:852
TCP	0.0.0.0	5000	0.0.0.0	0	LISTENING	svchost.exe:1012
TCP	172.0.0.2	1031	207.46.107.106	1863	ESTABLISHED	msnmsgr.exe:236
TCP	172.0.0.2	1810	64.236.34.97	80	ESTABLISHED	winamp3.exe:2084
TCP	172.0.0.2	1844	172.0.0.3	22	ESTABLISHED	SshClient.exe:3796
UDP	0.0.0.0	445	0.0.0.0	0	LISTENING	System:4
UDP	0.0.0.0	500	0.0.0.0	0	LISTENING	lsass.exe:580
UDP	0.0.0.0	1033	0.0.0.0	0	LISTENING	svchost.exe:984
UDP	0.0.0.0	1038	0.0.0.0	0	LISTENING	msnmsgr.exe:236
UDP	0.0.0.0	1040	0.0.0.0	0	LISTENING	svchost.exe:984
UDP	0.0.0.0	1048	0.0.0.0	0	LISTENING	svchost.exe:984
UDP	127.0.0.1	123	0.0.0.0	0	LISTENING	svchost.exe:852
UDP	127.0.0.1	1032	0.0.0.0	0	LISTENING	msnmsgr.exe:236
UDP	127.0.0.1	1057	0.0.0.0	0	LISTENING	ieexplore.exe:644
UDP	127.0.0.1	1801	0.0.0.0	0	LISTENING	POWERPNT.EXE:2...
UDP	127.0.0.1	1813	0.0.0.0	0	LISTENING	ieexplore.exe:2704
UDP	127.0.0.1	1900	0.0.0.0	0	LISTENING	svchost.exe:1012
UDP	172.0.0.2	9	0.0.0.0	0	LISTENING	msnmsgr.exe:236
UDP	172.0.0.2	123	0.0.0.0	0	LISTENING	svchost.exe:852
UDP	172.0.0.2	1900	0.0.0.0	0	LISTENING	svchost.exe:1012
UDP	172.0.0.2	32836	0.0.0.0	0	LISTENING	msnmsgr.exe:236

The bottom of the window features a tabbed interface with the following tabs: Local Info, Connections (selected), NetBIOS, NB Scanner, Name Scanner, Port Scanner, UDP Scanner, Ping Scanner, Trace, Whois, Finger, NS Lookup, Get Time, Telnet, HTTP, IP Monitor, and Host Monitor.

IP Monitor

