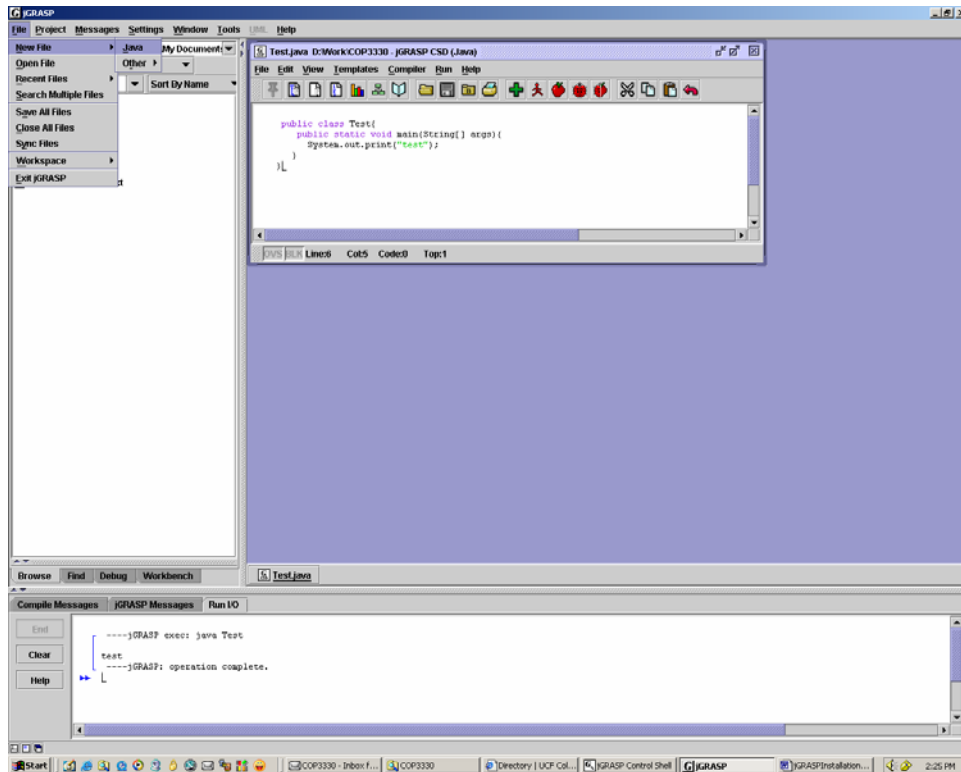


jGRASP Installation Instructions for HOME computer users

1. Download jGRASP from the jGRASP website at http://www.eng.auburn.edu/csse/research/research_groups/grasp/
 1. When downloading jGRASP, make sure you select jGRASP with the JRE, the largest download.
 2. Execute the jGRASP setup program that you just downloaded.
 3. You will not be running jGRASP on a Network so select NO when this option appears.



Your jGRASP settings should be ready to go!