

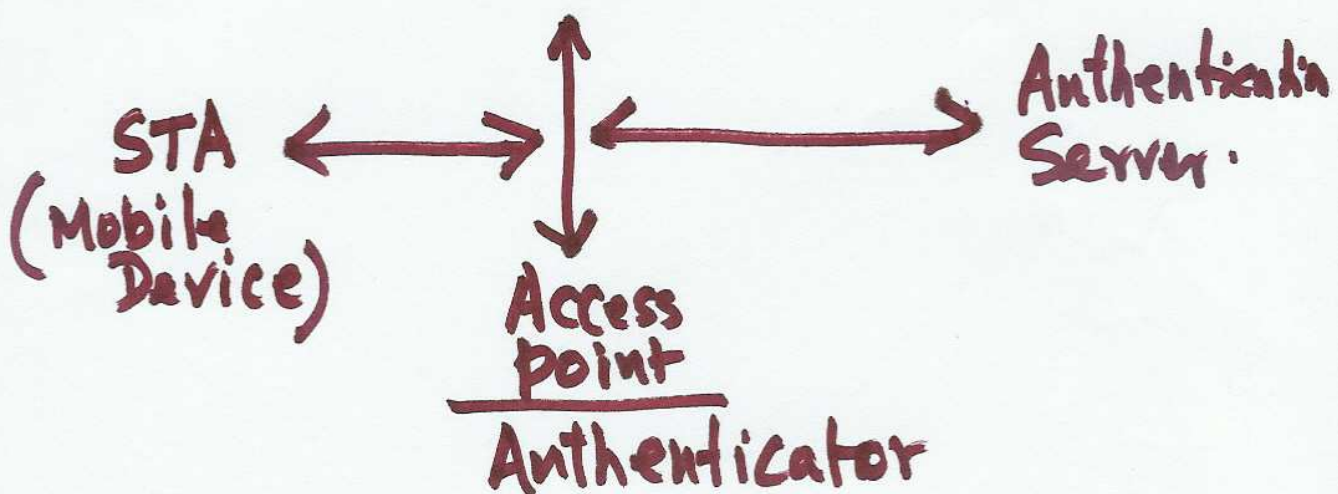
1/30/07

IEEE 802.1X, EAP  
EAPOL, RADIUS

RADIUS - Remote Access  
Dial-In User Service

---

EAP - Extensible Authentication  
Protocol



Request - Authenticator ②  
→ STA (Supplicant)

Response - STA → Auth

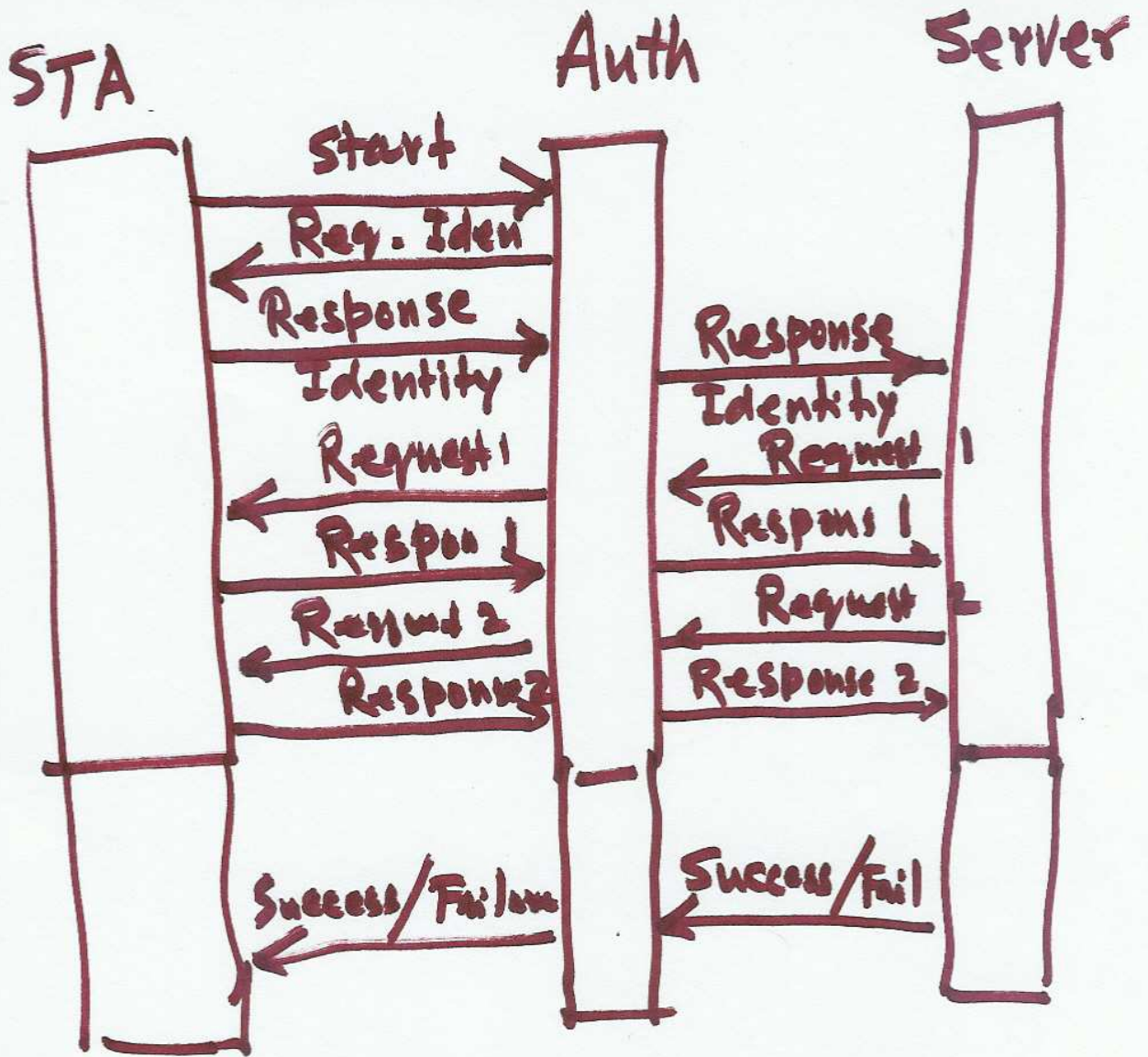
Success - Auth → STA

Failure Auth → STA

## EAPOL (EAP over LAN)

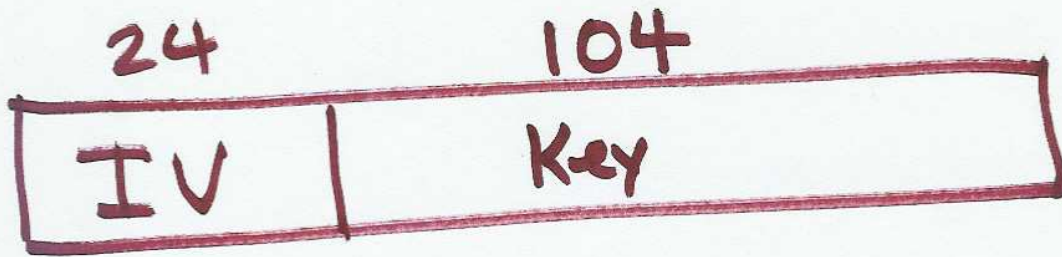
802.3 - Ethernet  
Token Ring

IEEE	802.1x	EAP
EAPOL	Start	
	Key	
	Packet	
	Logoff	
	Encapsulated Alert	



# WEP

IV - initial Vector (24 bits)

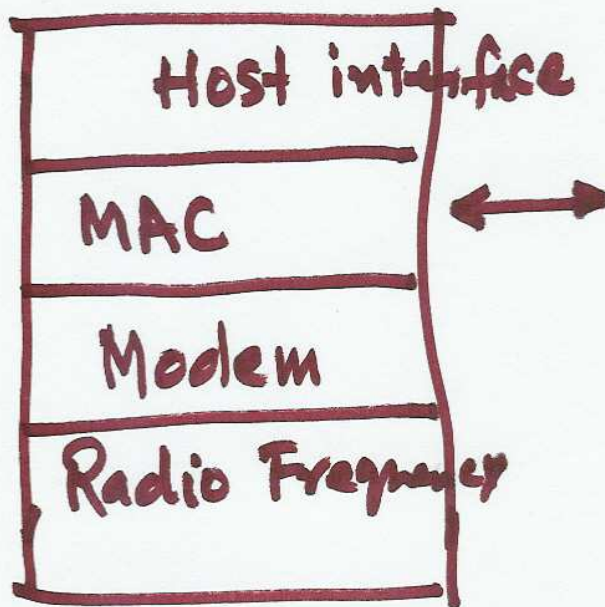


FMS attack

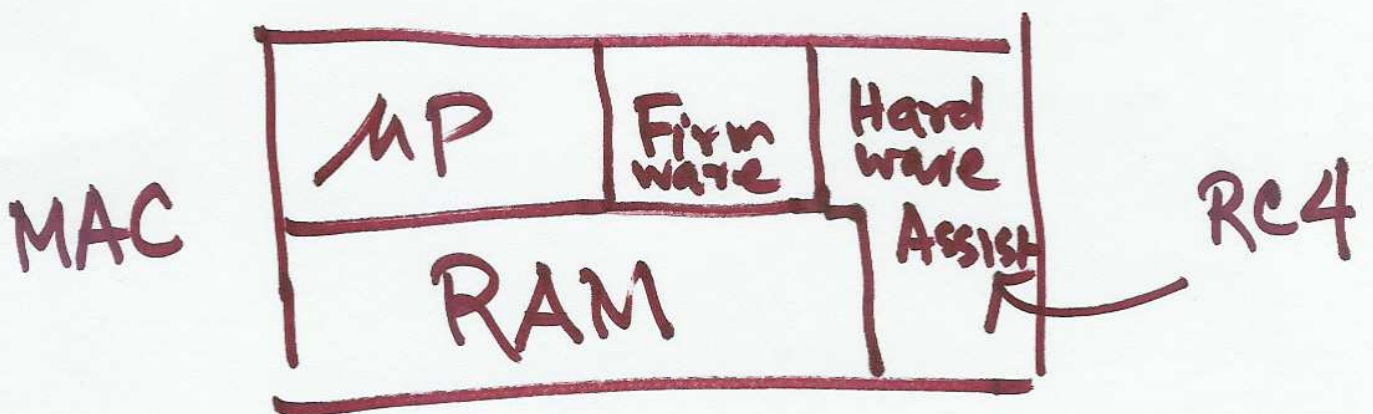
Message replay

TKIP (Temporal  
Key Integrity Protocol)

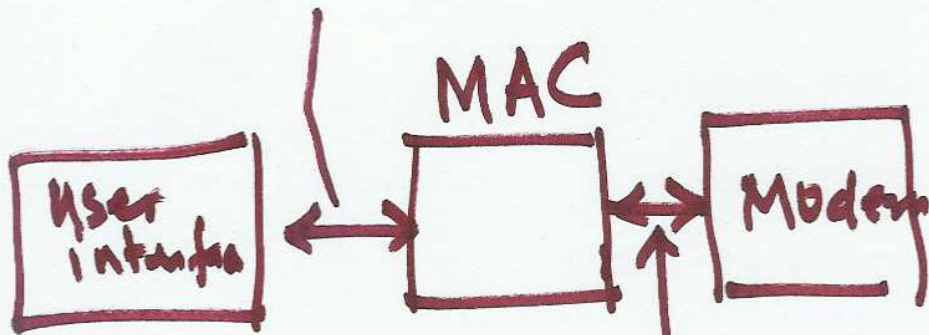
# 802.11 i



~~MAC~~ MAC- protocol issues  
WEP issues

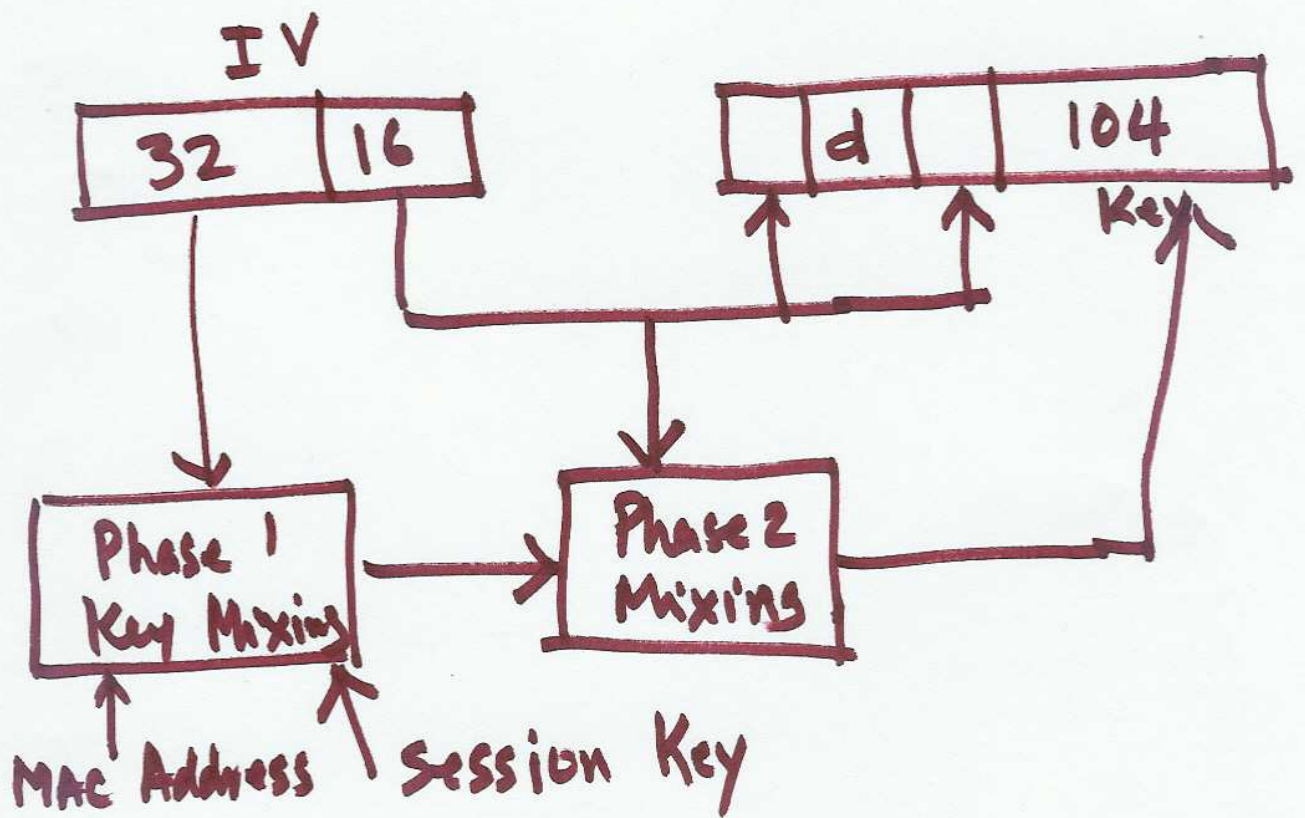


# MAC Service Data Unit

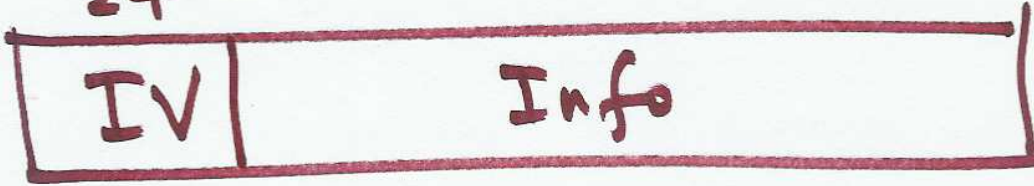


MAC protocol Data Unit

IV - 48 bits



24



56

