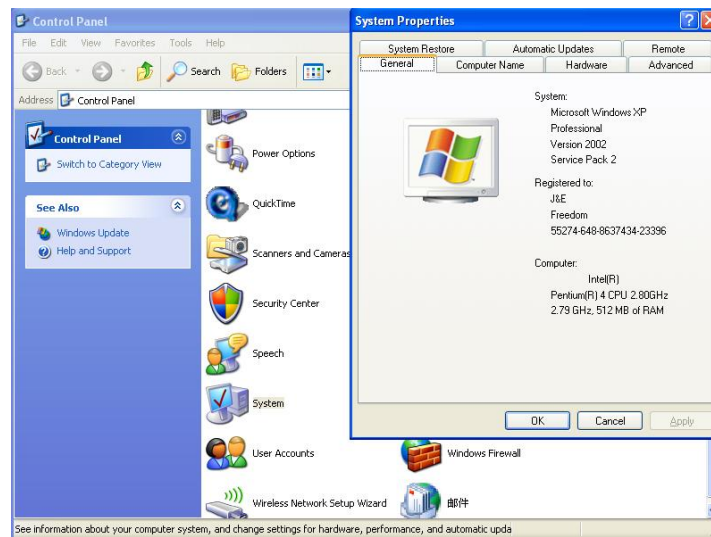
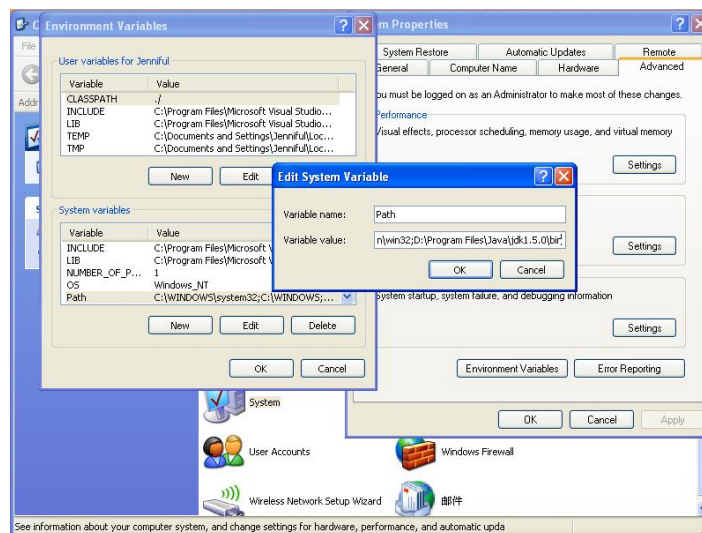


## JAVA Installation and Environment Variable Setting Instructions

1. Download JDK 1.4.x or higher.
2. Install JDK.
3. In order to execute JAVA using command line, you need to set the PATH and CLASSPATH to the bin directory under your JDK installation directory. To do that you can follow the steps below:
  - a. Go to Control Panel > System > Advanced > Environment Variables

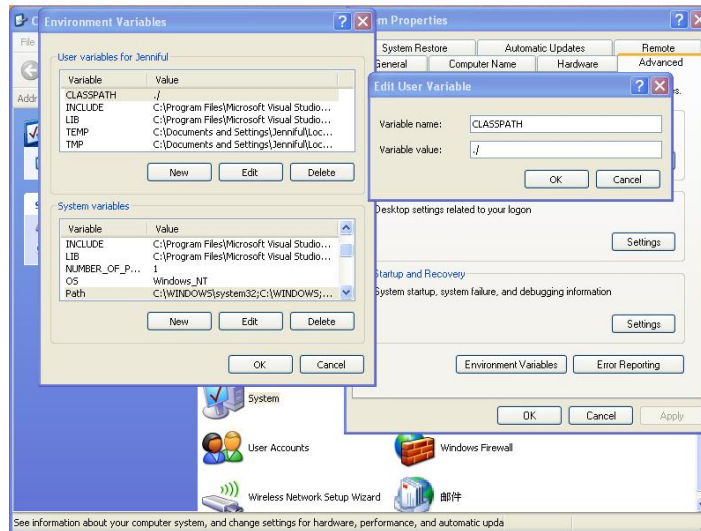


- b. Edit the PATH environment variable to match the location of your JDK bin directory



- c. Create a CLASSPATH environment variable that points to the location of your

class files (i.e. your work directory), or set it to ./ (point slash) which is your current directory when you are using command line.



4. Log off and log in again.
5. Test the compiler: javac.
6. Test the interpreter: java.