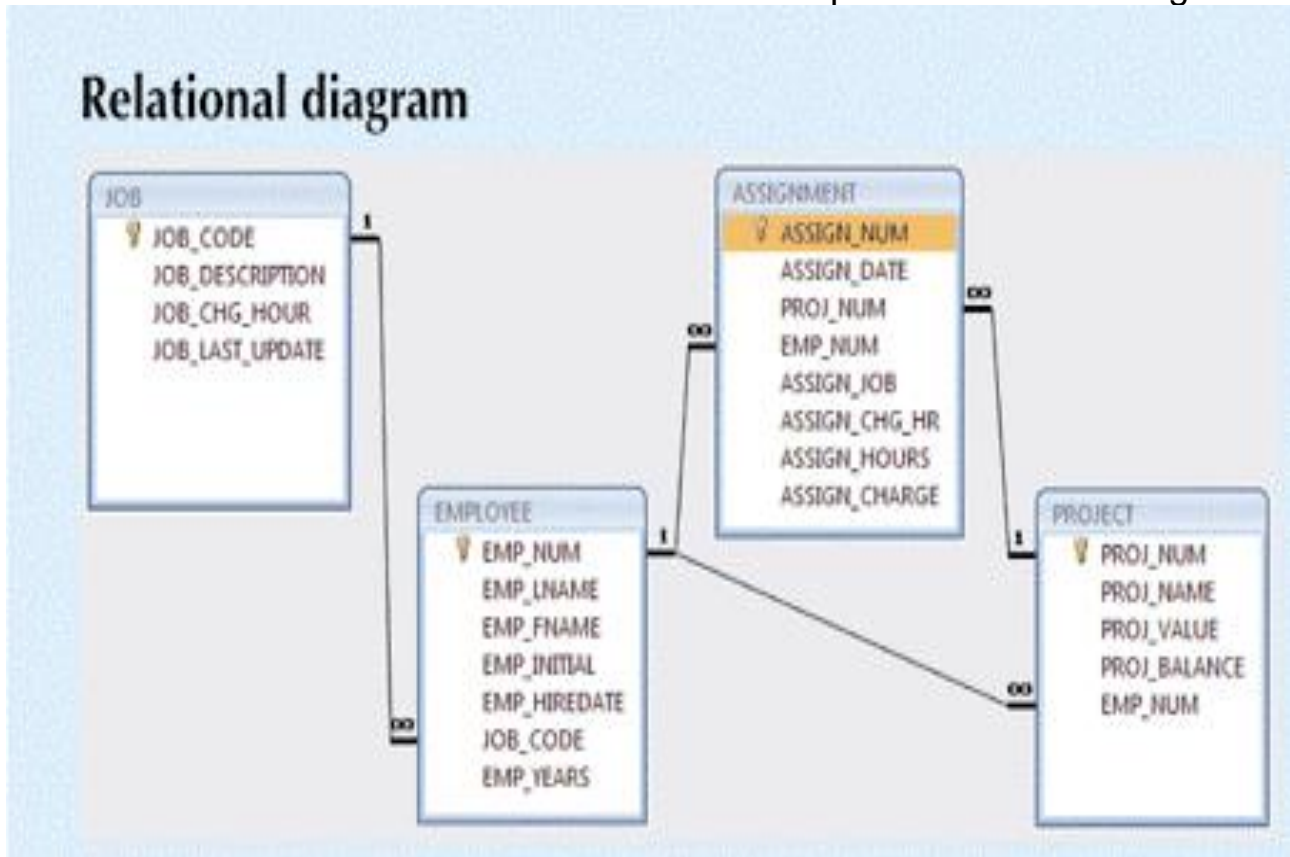


Homework #2 – 100 points -

Due: Wednesday March 26, 2014 by 11:59 pm NO LATE ASSIGNMENTS ACCEPTED

Answer each of the following questions completely. Make sure that your answers are **neatly written and very readable**. Points will be deducted if your assignment is not presented in a neat format. Submit your assignment via WebCourses.

Use the database ERD shown below for all of the problems in this assignment.



- (10 points) Write the SQL command that will determine the total number of hours worked for each employee and the total charges stemming from those hours worked. Recall that an employee can be assigned to more than one project at a time. List the employee number, employee last name, and the two calculated values as sumOfAssignedHours and sumOfAssignedCharges. (Note: In the ASSIGNMENT table, assign_charge is a derived attribute that is calculated by multiplying ASSIGN_CHG_HR by ASSIGN_HR.)
- (10 points) Write the SQL command that will determine the total hours and total charges accrued by each project represented in the ASSIGNMENT table. List the project number, the total hours as sumOfHoursCharged, and the total charges accrued as sumOfTotalCharges.

3. (10 points) Write the SQL command that will create a table named EMP2, which is shown as the following subset of the EMPLOYEE table.

ATTRIBUTE (FIELD) NAME	DATA DECLARATION
EMP_NUM	CHAR(3)
EMP_LNAME	VARCHAR(15)
EMP_FNAME	VARCHAR(15)
EMP_INITIAL	CHAR(1)
EMP_HIREDATE	DATE
JOB_CODE	CHAR(3)

4. (10 points) Write the SQL command that will add the attributes EMP_PCT and PROJ_NUM to the EMP2 table you just created in problem 3 above. The EMP_PCT is the bonus percentage to be paid to each employee. The new attribute characteristics are: EMP_PCT DECIMAL(4,2) and PROJ_NUM CHAR(3).
5. (10 points) Write the SQL command that will change the EMP_PCT value to 3.85 for the person whose employee number is 103.
6. (10 points) Write the SQL command that will change the project number to 18 for every employee listed in the EMP2 table if their job code is 502 or higher.
7. (10 points) Write the SQL command that will determine the average bonus of all employees in the EMP2 table who have a job code of 502.
8. (10 points) Write the SQL command that will list each employee's employee number, their last name, and their job description for every employee listed in the EMPLOYEE table.
9. (10 points) Write the SQL command that will list the job_code and job_description for any job description for any type of engineer.
10. (10 points) Write the SQL command that will determine the employee number and employee last name for every employee who is currently assigned to a project with a proj_value of more than five million dollars.